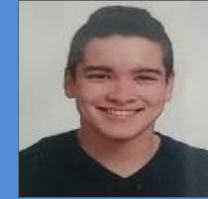




PARTIDOS CARA A CARA



| Socio | Nombre | JUG | GAN | PER | TB-D | TB-T |
|-------|------------------------------|-----|-----|-----|------|------|
| 439 | José Luis Sánchez Villagordo | 10 | 9 | 1 | 1 | 1 |
| 481 | Javier Plaza Lorente | 10 | 1 | 9 | 0 | 0 |

| Fecha | G/F | J/R | Socio | Nombre | Socio | Nombre | S1 | S2 | S3/TB | GAN | PER | INC | EVENTO | | | |
|------------|-----|-----|-------|------------------------------|-------|------------------------------|----|----|-------|-----|-----|-----|--------|-----|--|------------------|
| 01/07/2017 | | F | 439 | José Luis Sánchez Villagordo | 481 | Javier Plaza Lorente | 6 | 3 | 6 | 0 | | | 439 | 481 | | PLAY OFF |
| 02/05/2017 | 1 | 9 | 439 | José Luis Sánchez Villagordo | 481 | Javier Plaza Lorente | 5 | 7 | 5 | 7 | | | 481 | 439 | | LIGA VERANO |
| 25/03/2017 | F | F | 439 | José Luis Sánchez Villagordo | 481 | Javier Plaza Lorente | 6 | 1 | 6 | 1 | | | 439 | 481 | | TORNEO NAVIDAD |
| 19/12/2016 | 1 | 9 | 439 | José Luis Sánchez Villagordo | 481 | Javier Plaza Lorente | 3 | 6 | 6 | 3 | 10 | 3 | 439 | 481 | | LIGA INVIERNO |
| 09/07/2016 | | F | 439 | José Luis Sánchez Villagordo | 481 | Javier Plaza Lorente | 6 | 1 | 6 | 3 | | | 439 | 481 | | PLAY OFF |
| 16/06/2016 | F | F | 439 | José Luis Sánchez Villagordo | 481 | Javier Plaza Lorente | 6 | 2 | 6 | 3 | | | 439 | 481 | | TORNEO PRIMAVERA |
| 08/03/2016 | 1 | 4 | 439 | José Luis Sánchez Villagordo | 481 | Javier Plaza Lorente | 6 | 2 | 6 | 1 | | | 439 | 481 | | LIGA VERANO |
| 16/01/2016 | F | F | 439 | José Luis Sánchez Villagordo | 481 | Javier Plaza Lorente | 6 | 2 | 6 | 4 | | | 439 | 481 | | TORNEO NAVIDAD |
| 20/06/2015 | F | F | 439 | José Luis Sánchez Villagordo | 481 | Javier Plaza Lorente | 6 | 2 | 6 | 4 | | | 439 | 481 | | TORNEO PRIMAVERA |
| 05/04/2014 | F | 1ª | 481 | Javier Plaza Lorente | 439 | José Luis Sánchez Villagordo | 4 | 6 | 3 | 6 | | | 439 | 481 | | TORNEO PRIMAVERA |